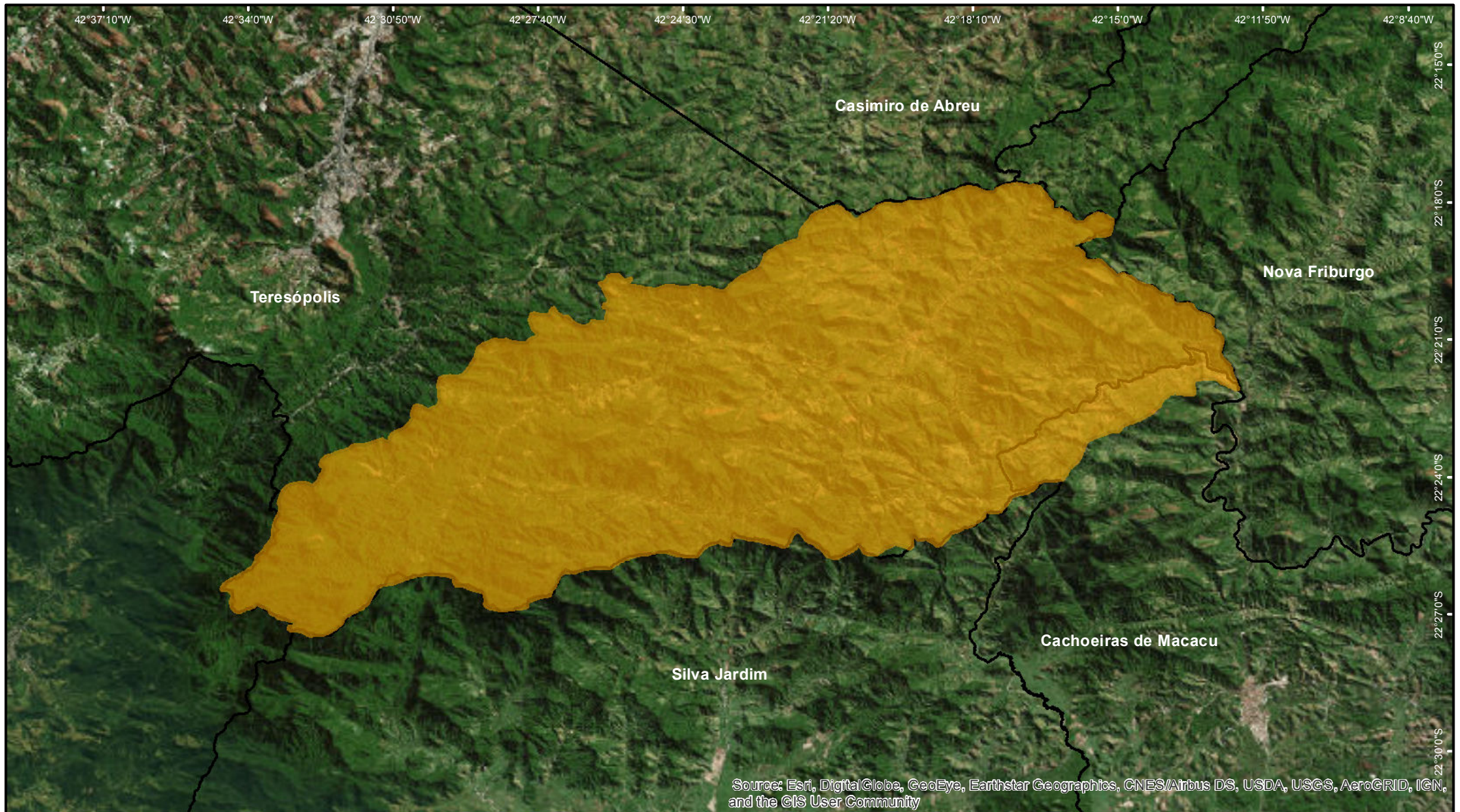




# Área de Proteção Ambiental de Macaé de Cima



Source: Esri, DigitalGlobe, GeoEye, Earthstar Geographics, CNES/Airbus DS, USDA, USGS, AeroGRID, IGN, and the GIS User Community

## Legenda

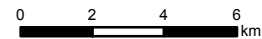
-  APA de Macaé de Cima
-  Limite Municipal

## Mapa de Localização



## Fonte de Dados

Ucs Estaduais - INEA 2018  
Limite Municipal - CEPERJ 1:25.000



Sistema de Coordenadas: SIRGAS 2000  
Sistema Geodésico: SIRGAS 2000

**inea**  
instituto estadual do ambiente