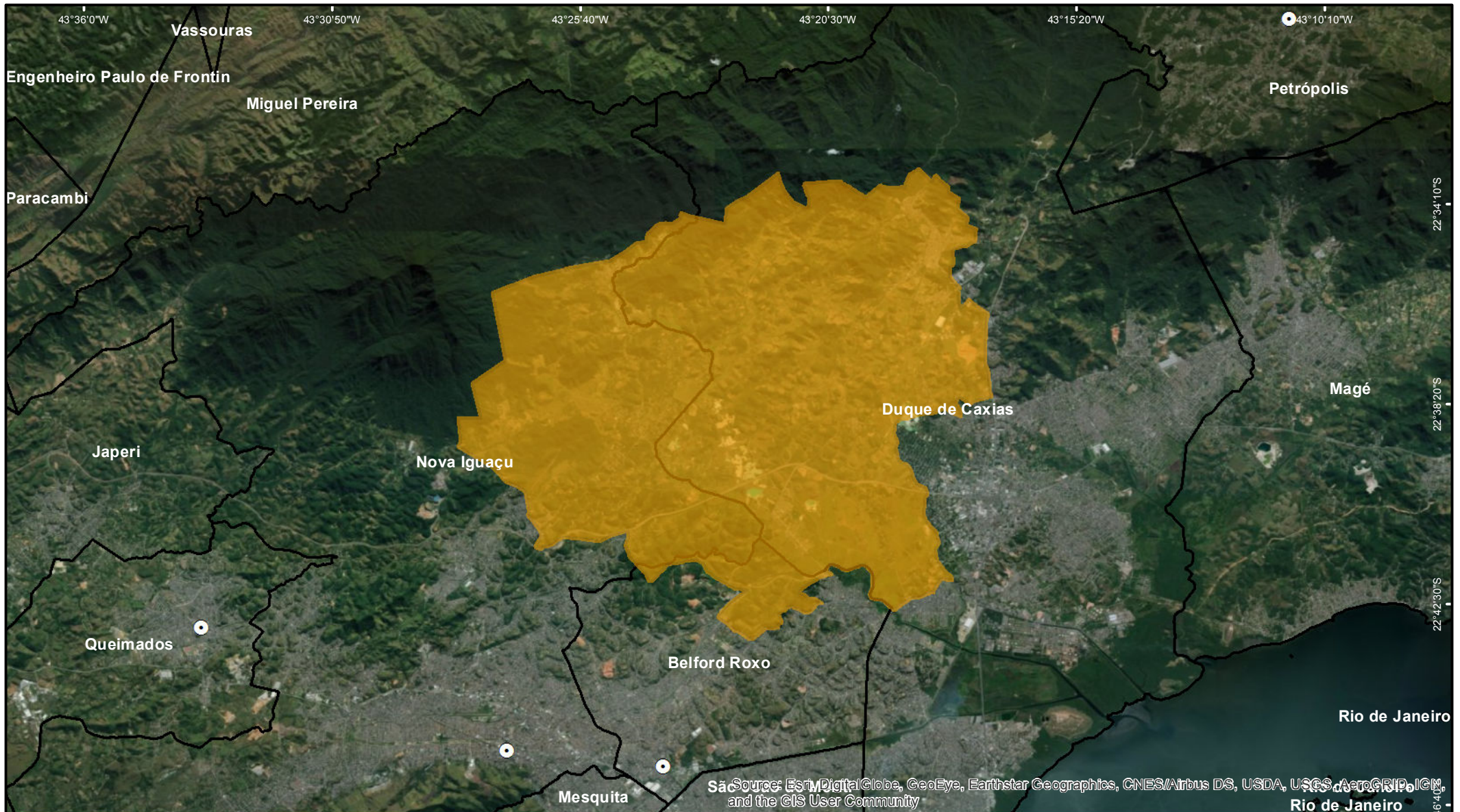





# Área de Proteção Ambiental do Alto Iguaçu



## Legenda

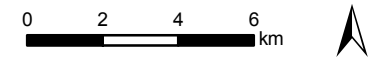
-  APA do Alto Iguaçu
-  Limite Municipal
-  Sede Municipal

## Mapa de Localização



## Fonte de Dados

Ucs Estaduais - INEA 2018  
Limite Municipal - CEPERJ 1:25.000  
Sede Municipal - IBGE 1:50.000



Sistema de Coordenadas: SIRGAS 2000  
Sistema Geodésico: SIRGAS 2000

