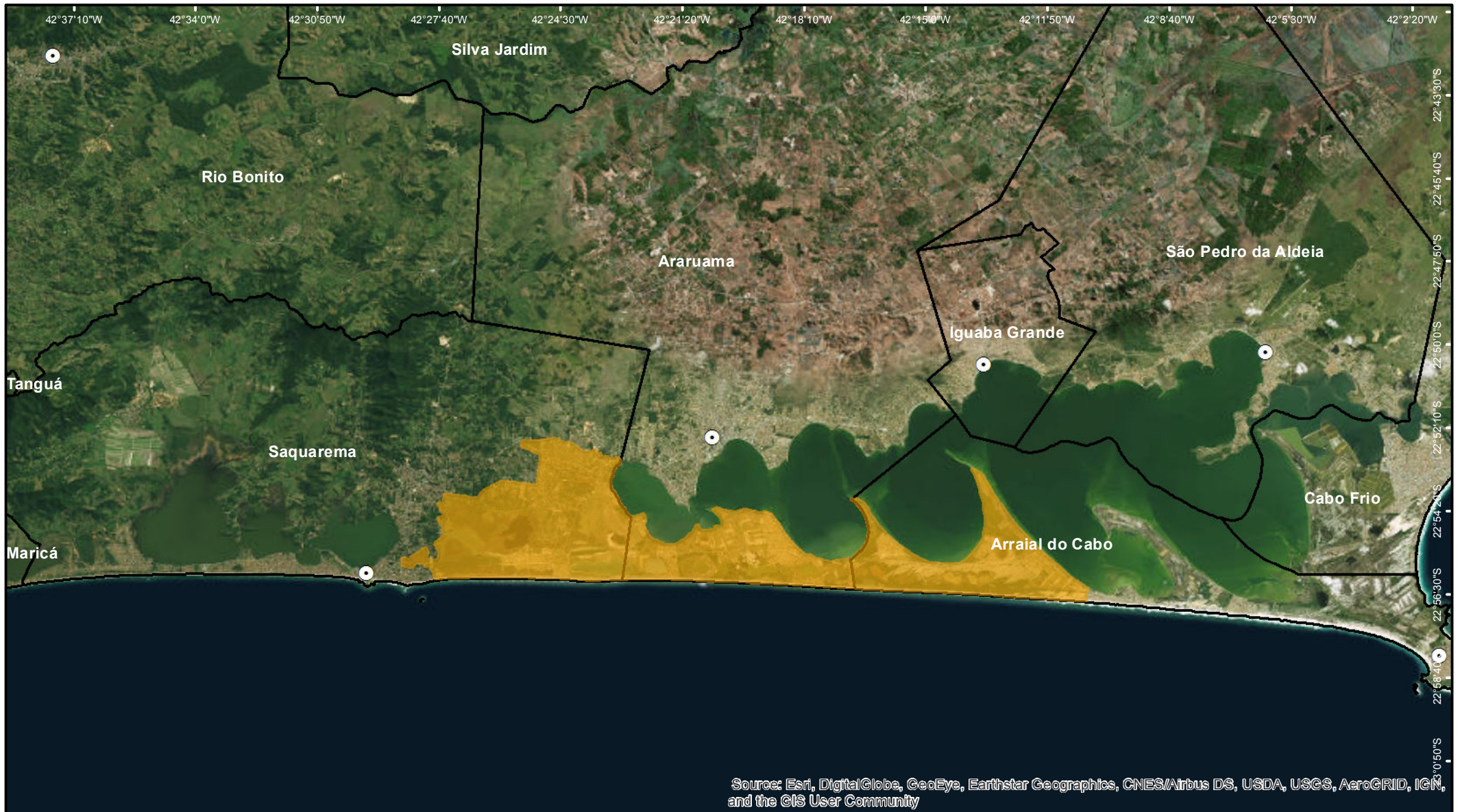





Área de Proteção Ambiental de Massambaba

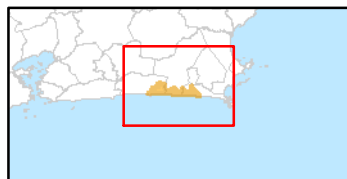


Source: Esri, DigitalGlobe, GeoEye, Earthstar Geographics, CNES/Airbus DS, USDA, USGS, AeroGRID, IGN, and the GIS User Community

Legenda

-  APA Massambaba
-  Sede Municipal
-  Limite Municipal

Mapa de Localização



Fonte de Dados

Ucs Estaduais - INEA 2018
Limite Municipal - CEPERJ 1:25.000
Sede Municipal - IBGE 1:50.000

0 2,5 5 7,5 km



Sistema de Coordenadas: SIRGAS 2000
Sistema Geodésico: SIRGAS 2000

inea
instituto estadual do ambiente